



Automated Substitute Placement & Absence Management
Selected by more districts than all other systems combined

Client Services Help Guide

Login Problems

Login Info

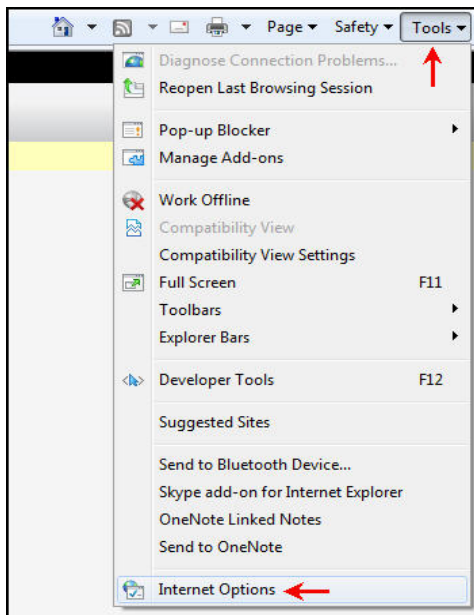
To login, use the same login credentials as you use at your school district.

If you are unsure please contact your district administrator.

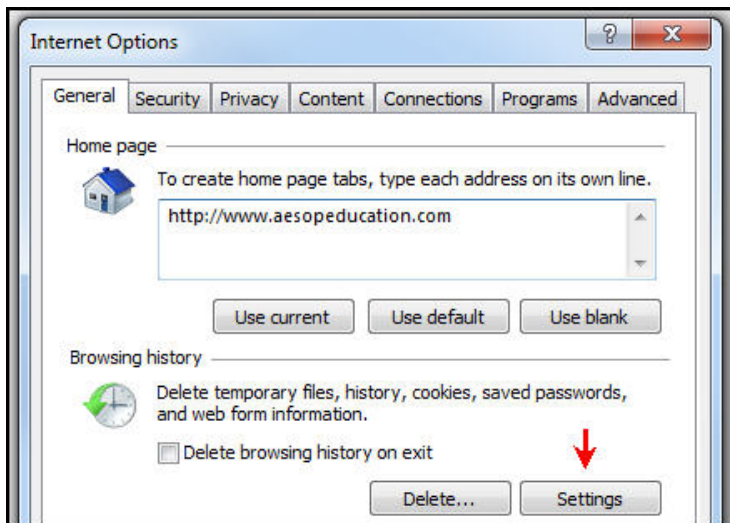
Still Having Trouble?

Check your browser (instructions are for Internet Explorer using a PC)

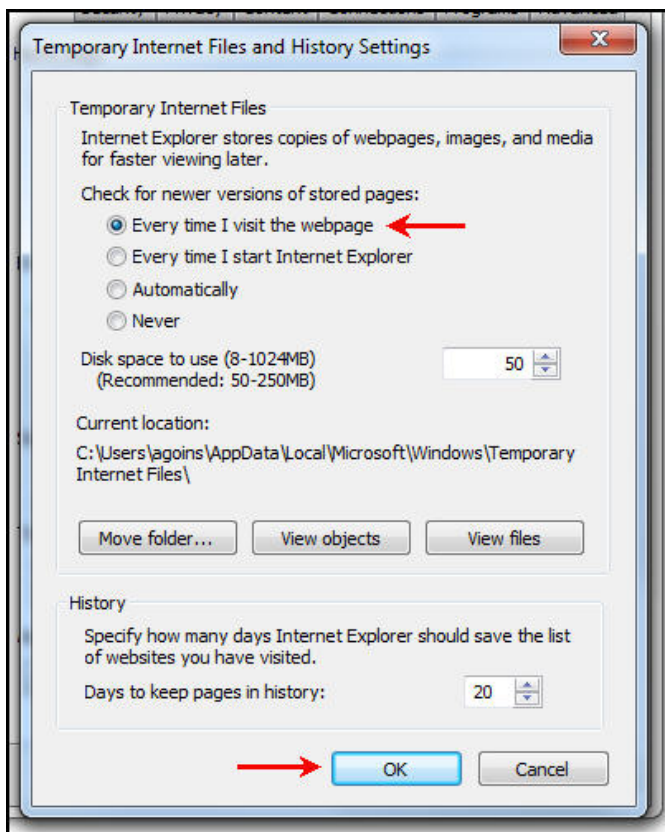
1. Make sure you type www.aesopeducation.com into the address bar (not a bookmark)
2. In your web browser go to "Tools" and then "Internet Options"



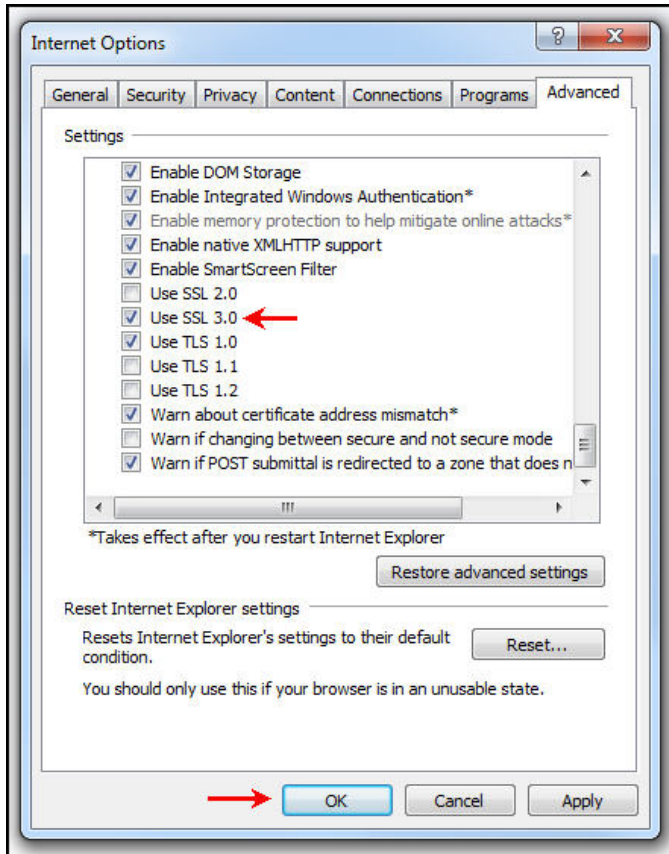
3. Choose the "General" tab and then under "Browsing History" click the "Settings" button



4. Click the option "Every time I visit the webpage" and then "ok"



5. Click the "Advanced" tab and make sure that "Use SSL 3.0" is checked



6. Check your "Privacy" setting and make sure it is at medium. Click "ok" and then "ok" again

7. Close your browser and reopen your browser and try to login



Still Can't Login?

If you are still having difficulties logging in, please contact your district's Aesop Administrator for help.